



Aragon Tower, London
SE8

GARTON JONES.COM

Aragon Tower, London , SE8

GARTON JONES.COM

9 Albert
Embankment
London
SE1 7SP

Sales +44 (0) 20 7735 1888
nineelms@gartonjones.com
www.gartonjones.com

£475,000 Leasehold

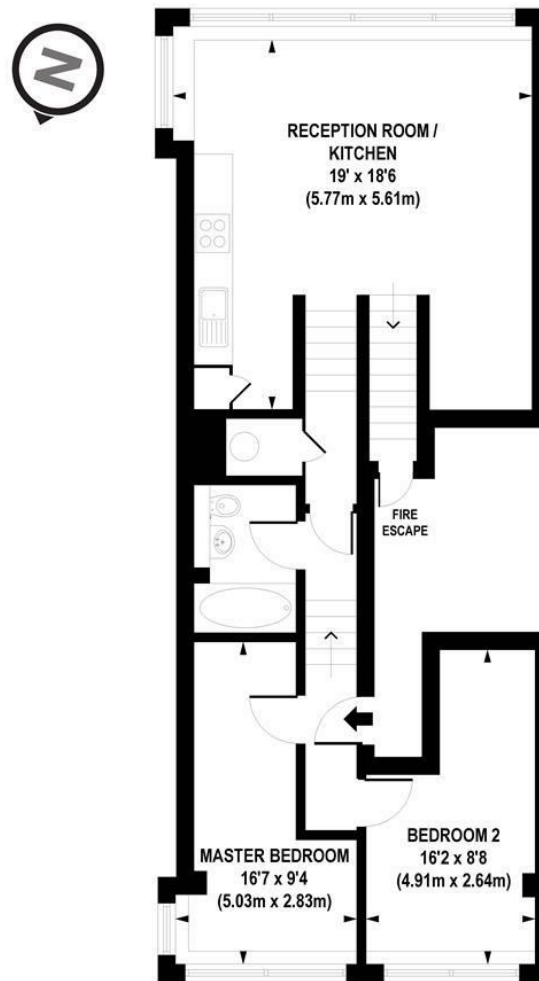
A fantastic, split-level 2-bedroom, 1 bathroom of 717sq.ft (66.57sq.m) offered for sale in Aragon Tower, a popular residential development on the banks of the River Thames and completed by Berkeley Homes in 2006. Located on the 22nd floor (of 29 in total) this well-proportioned 2-bedroom apartment is offered in great condition and benefits from stunning panoramic views of the London skyline from all rooms taking in some of London's iconic sites including the O2, The Shard and views up and down the River Thames. The property further benefits from 2 good sized bedrooms, a modern bathroom suite and spacious open-plan reception & kitchen and is flooded by natural light throughout and comes with a secure parking bay. Aragon Tower further benefits from a 24-hour concierge service and is well located for quick and easy access to Surrey Quays and Greenwich with access to plenty of shops, restaurants, cafes & bars all a short walk away.

Leasehold: 181 years remaining
Service Charge: Approx. £4,500 per annum
(includes water rates)
Ground Rent: £350 per annum
Lewisham Council Tax Band C - £1,614.94 per annum

- EWS1 Compliant
- 717 Sq.ft (66.57 Sq.m)
- 2 Bedrooms
- 1 Bathroom
- Split Level Maisonette Layout
- Open Plan Kitchen & Reception
- Stunning Panoramic Views of London & the River Thames
- 24 Hour Concierge
- Secure Parking Bay
- Riverside Development



EPC certificate available on request.



APPROX. GROSS INTERNAL FLOOR AREA 717 sq. ft / 66.57 sq. m

Floorplan is for illustrative purposes only and is not to scale.
Every attempt has been made to ensure the accuracy of the floorplan shown, however all measurements,
fixtures, fittings and data shown are an approximate interpretation for illustrative purposes only.
Liability for errors, omissions or mis-statement through negligence or otherwise is hereby excluded.

CP CREATIVE
PROPERTY MARKETING

